

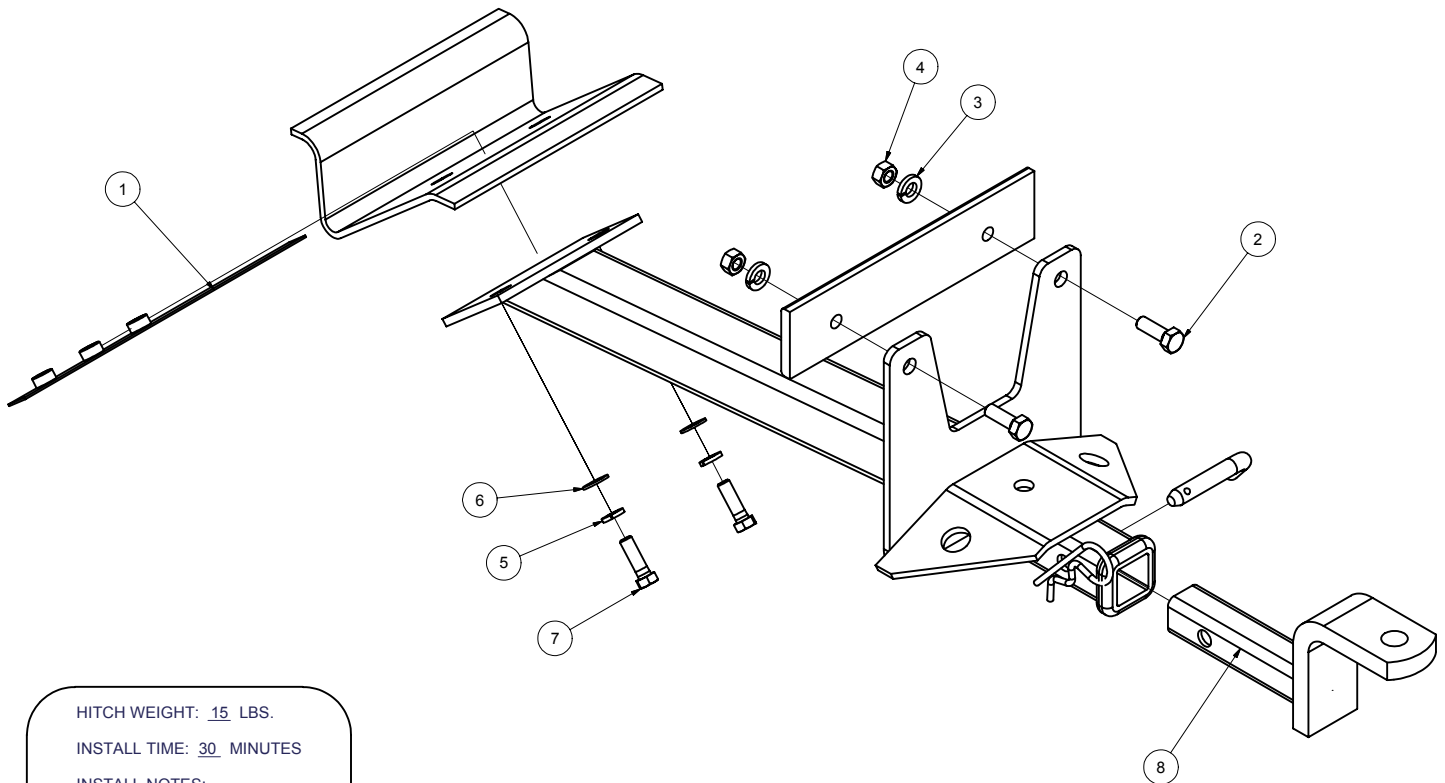
11807 / 257217

81-86 SAAB 900 INCLUDING TURBO

2/4/2008

GROSS LOAD CAPACITY WHEN USED AS A WEIGHT CARRYING HITCH: 2,500 LBS. TRAILER WEIGHT & 250 LBS. TONGUE WEIGHT.
*****DO NOT EXCEED VEHICLE MANUFACTURER'S RECOMMENDED TOWING CAPACITY.*****

Parts List			
ITEM	QTY	PART NUMBER	DESCRIPTION
1	1	CM-SP103	NUT PLATE
2	2	M10 - 1.5 x 30 HEX	HEX BOLT
3	2	7/16	HELICAL LOCK WASHER
4	2	M10 x 1.5	Hex Nut
5	2	3/8"	LOCK WASHER
6	2	3/8"	WASHER
7	2	3/8 - 16 x 1 1/4	HEX BOLT
8	1	D-55001	1 1/4" CURT BALL MOUNT
9	1	F-4	1/2" DIA. PIN & CLIP



HITCH WEIGHT: 15 LBS.

INSTALL TIME: 30 MINUTES

INSTALL NOTES:

NO DRILLING REQUIRED

INSTALLATION STEPS

- 1) Remove two (2) existing 10 mm screws at either side of car's rear bumper bracket at rear panel. On certain models it will be necessary to remove a bolted on bracket under floor at rear center of car.
- 2) Using fasteners provided, mount hitch to car at rear panel as shown. Using fasteners and nut plate provided, mount hitch at existing Saab bracket under floor.
- 3) Torque all 3/8" fasteners to 30 lb-ft.

PERIODICALLY CHECK THIS RECEIVER HITCH TO ENSURE THAT ALL FASTENERS ARE TIGHT AND THAT ALL STRUCTURAL COMPONENTS ARE SOUND.

Curt Manufacturing Inc., warrants this product to be free of defects in material and/or workmanship at the time of retail purchase by the original purchaser. If the product is found to be defective, Curt Manufacturing Inc., may repair or replace the product, at their option, when the product is returned, prepaid, with proof of purchase. Alteration to, misuse of, or improper installation of this product voids the warranty. Curt Manufacturing Inc.'s liability is limited to repair or replacement of products found to be defective, and specifically excludes liability for incidental or consequential loss or damage.