



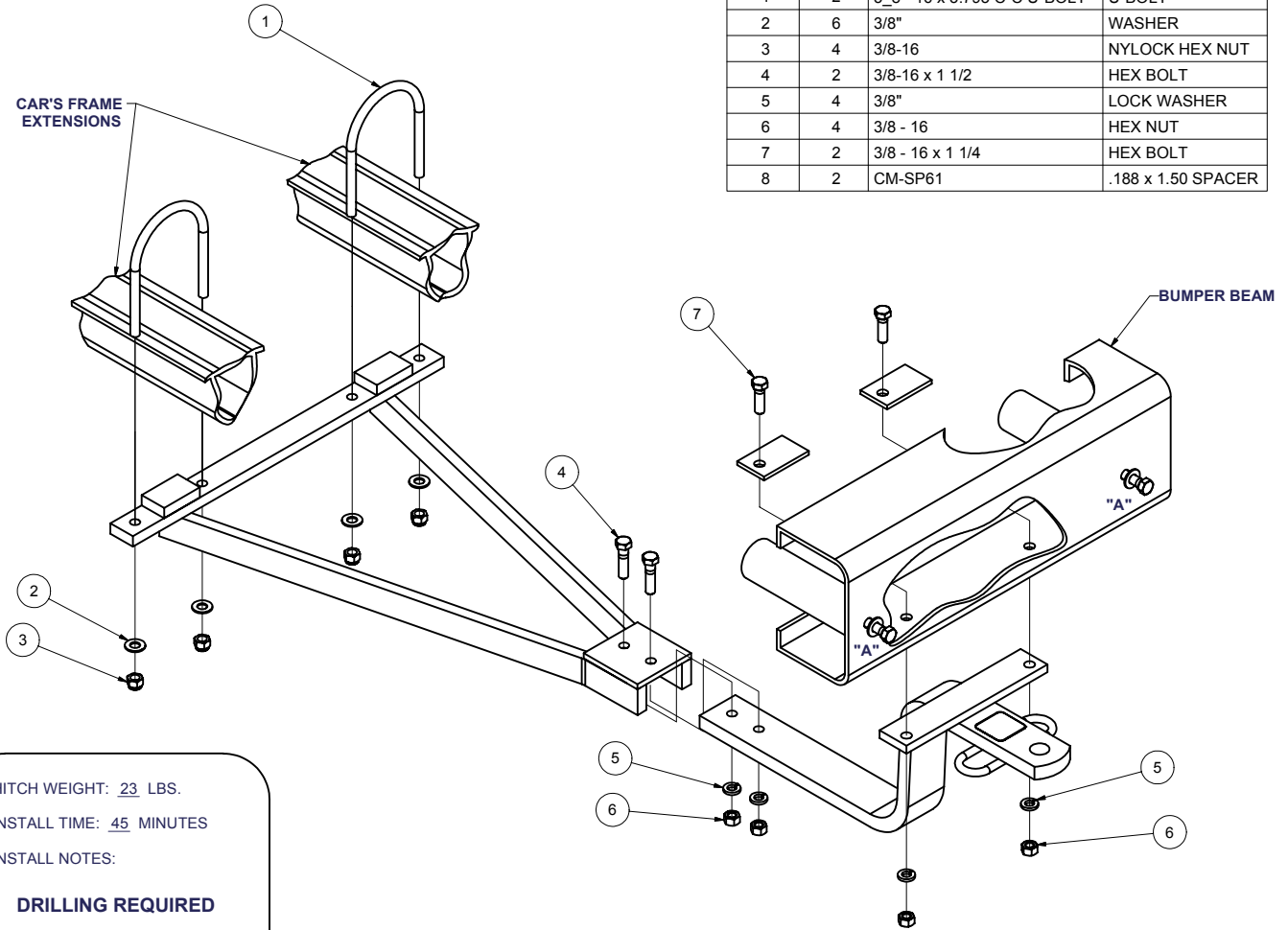
11652

VOLKSWAGEN BEETLE

10/16/2006

GROSS LOAD CAPACITY WHEN USED AS A WEIGHT CARRYING HITCH: 1,000 LBS. TRAILER WEIGHT & 100 LBS. TONGUE WEIGHT. *DO NOT EXCEED VEHICLE MANUFACTURER'S RECOMMENDED TOWING CAPACITY.*****

Parts List			
ITEM	QTY	PART NUMBER	DESCRIPTION
1	2	3_8 - 16 x 3.795 C-C U-BOLT	U-BOLT
2	6	3/8"	WASHER
3	4	3/8-16	NYLOCK HEX NUT
4	2	3/8-16 x 1 1/2	HEX BOLT
5	4	3/8"	LOCK WASHER
6	4	3/8 - 16	HEX NUT
7	2	3/8 - 16 x 1 1/4	HEX BOLT
8	2	CM-SP61	.188 x 1.50 SPACER



HITCH WEIGHT: 23 LBS.
 INSTALL TIME: 45 MINUTES
 INSTALL NOTES:
DRILLING REQUIRED

INSTALLATION STEPS

- 1) Fasten together the chassis and tongue sub-assemblies using fasteners as shown. Place these screws from the top.
- 2) To reinforce the bumper mounting points, remove one bolt on each side from under the plastic trim at "A". Reassemble the existing bolts with flat washers provided under the bolt head as shown.
- 3) Support the hitch under car's rear bumper and engine/transaxle as shown. Bracket on the hitch tongue should fall under the rear bumper. With the car elevated and supported safely, install U-bolts by passing them over the car's frame extensions, and through holes in chassis sub-assembly as shown. Install the balance of fasteners, but do not final tighten yet.
- 4) Adjust the hitch to be centered and square with the rear bumper. Locate the hitch as far rearward as possible under the rear bumper, leaving room to install fasteners with backing plates INSIDE the bumper. Use the hitch as a template and drill rear bumper two places for 3/8" screws. Install fasteners shown.
- 5) Torque all 3/8" fasteners to 35 lb-ft. DO NOT USE IMPACT WRENCH ON U-BOLTS.

PERIODICALLY CHECK THIS RECEIVER HITCH TO ENSURE THAT ALL FASTENERS ARE TIGHT AND THAT ALL STRUCTURAL COMPONENTS ARE SOUND.

Curt Manufacturing Inc., warrants this product to be free of defects in material and/or workmanship at the time of retail purchase by the original purchaser. If the product is found to be defective, Curt Manufacturing Inc., may repair or replace the product, at their option, when the product is returned, prepaid, with proof of purchase. Alteration to, misuse of, or improper installation of this product voids the warranty. Curt Manufacturing Inc.'s liability is limited to repair or replacement of products found to be defective, and specifically excludes liability for incidental or consequential loss or damage.